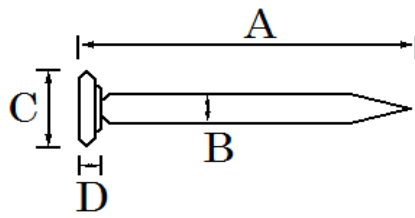


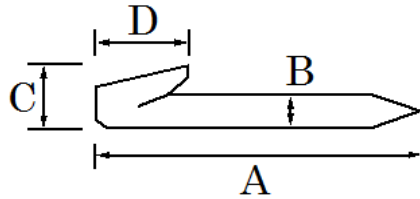
卷頭釘



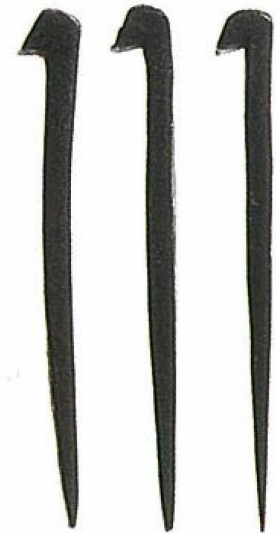
寸法(A)	B	C	D
25	2.0	6	2.0
30	2.3	7	2.0
36	2.3	7	2.3
42	2.5	8	2.3
48	3.0	10	2.5
55	3.0	10	2.5
60	3.5	11	3.0
75	4.0	12	3.0
90	4.5	14	4.0
105	5.0	16	4.0



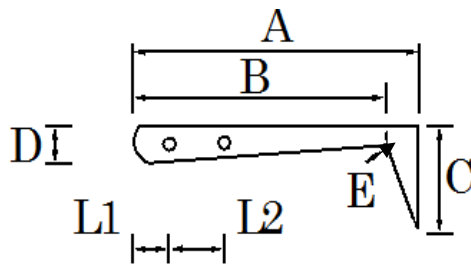
階折釘



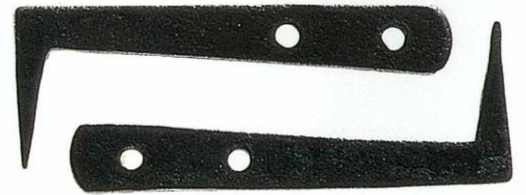
寸法(A)	B	C	D
25	2.0	4.0	3.5
30	2.0	4.0	3.5
36	2.3	4.0	4.0
45	2.5	5.0	4.5
55	3.0	6.0	5.0
60	3.5	6.5	5.5
75	4.0	7.0	6.5
90	4.5	8.0	7.5



メカス釘



寸法(A)	B	C	D	E	板厚	L1	L2	孔径	角度
60	55	22	10	.0±0.	2.3	8	15	3	85~88
75	70	25	10	.5±0.	2.5	8	15	3	85~88
90	80	32	12	.5±0.	3	10	20	4	85~88



イナゴ釘

線径	A	B	C
1	11	10	7

